

DANRE pax2a Antibody (Center)
Affinity Purified Rabbit Polyclonal Antibody (Pab)
Catalog # Azb10018a

Specification

DANRE pax2a Antibody (Center) - Product Information

Application	WB,E
Primary Accession	Q90268
Reactivity	Zebrafish
Host	Rabbit
Clonality	Polyclonal
Isotype	Rabbit IgG
Calculated MW	44099
Antigen Region	258-284

DANRE pax2a Antibody (Center) - Additional Information

Gene ID 30425

Other Names

Paired box protein Pax-2a, No isthmus protein, Pax[Zf-b], pax2a, noi, pax21, paxzf-b

Target/Specificity

This DANRE pax2a antibody is generated from rabbits immunized with a KLH conjugated synthetic peptide between 258-284 amino acids from the Central region of DANRE pax2a.

Dilution

WB~~1:1000

E~~Use at an assay dependent concentration.

Format

Purified polyclonal antibody supplied in PBS with 0.09% (W/V) sodium azide. This antibody is purified through a protein A column, followed by peptide affinity purification.

Storage

Maintain refrigerated at 2-8°C for up to 2 weeks. For long term storage store at -20°C in small aliquots to prevent freeze-thaw cycles.

Precautions

DANRE pax2a Antibody (Center) is for research use only and not for use in diagnostic or therapeutic procedures.

DANRE pax2a Antibody (Center) - Protein Information

Name pax2a

Synonyms noi, pax2.1, paxzf-b

Function Probable transcription factor involved in the development of the midbrain/hindbrain boundary (MHB) organizer and specification of neuronal cell fates. Required for establishment of eng2 and eng3 gene expression in the midbrain and MHB primordium during late gastrulation.

Cellular Location

Nucleus.

Tissue Location

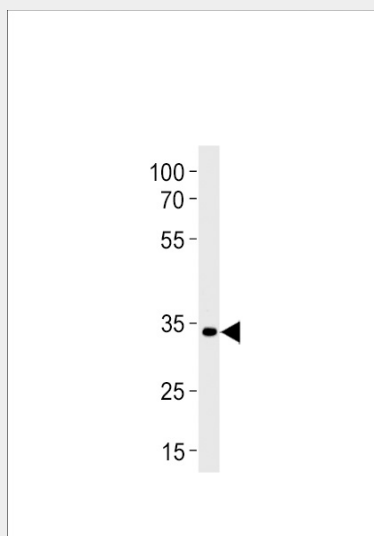
Expressed during embryogenesis in the kidney, optic stalk, midbrain, otic vesicle and a row of cells along the spinal cord and the hindbrain

DANRE pax2a Antibody (Center) - Protocols

Provided below are standard protocols that you may find useful for product applications.

- [Western Blot](#)
- [Blocking Peptides](#)
- [Dot Blot](#)
- [Immunohistochemistry](#)
- [Immunofluorescence](#)
- [Immunoprecipitation](#)
- [Flow Cytometry](#)
- [Cell Culture](#)

DANRE pax2a Antibody (Center) - Images



DANRE pax2a Antibody (Center) (Cat. #Azb10018a) western blot analysis in zebra fish brain tissue lysates (35ug/lane). This demonstrates the DANRE pax2a antibody detected the DANRE pax2a protein (arrow).

DANRE pax2a Antibody (Center) - Background

Probable transcription factor involved in the development of the midbrain/hindbrain boundary (MHB) organizer and specification of neuronal cell fates. Required for establishment of eng2 and eng3 gene expression in the midbrain and MHB primordium during late gastrulation.

DANRE pax2a Antibody (Center) - References

Krauss S., et al. Development 113:1193-1206(1991).
Lun K., et al. Development 125:3049-3062(1998).